



Building Relationships and Partnerships towards an Equitable Food System


Thursday, November 30, 2023

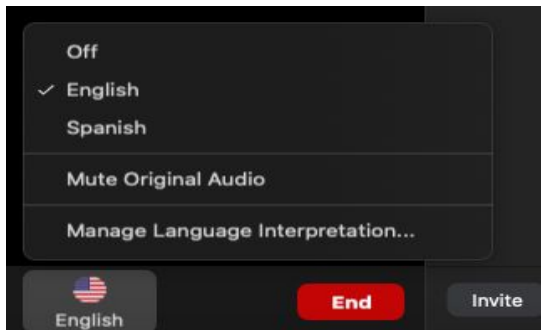


2023 NOW Webinar Series
Collaborative Action and Coalition Building:
Transformative Practices for Healing, Joy, and Equity

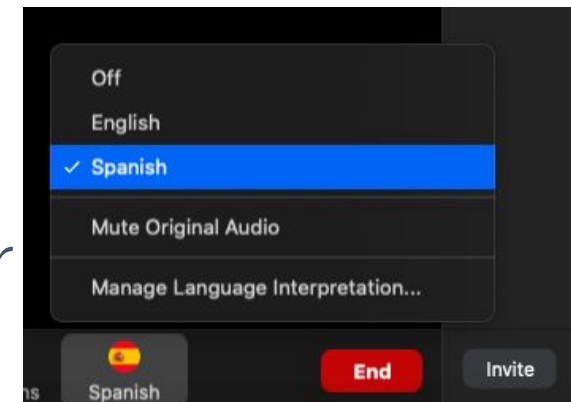


Language Justice: Zoom Webinar Interpretación/ Interpretation

1. In your meeting/webinar controls, click Interpretation. 
2. Click the language that you would like to hear.
3. (Optional) To only hear the interpreted language, click Mute Original Audio.



1. En los controles de la reunión o el seminario web, hacer clic en Interpretación.
2. Hacer clic en el idioma que desee escuchar.
3. (Opcional) Para escuchar solo el idioma interpretado, haga clic en Silenciar audio original.

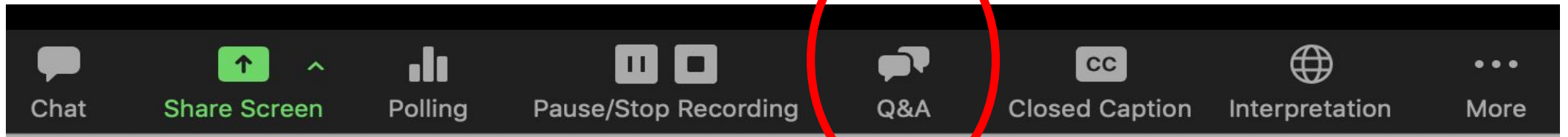


Housekeeping

- Spanish Language Access
 - Community Language Cooperative (CLC) based in Denver, CO
- Slides and recording will be posted on the NOW Forum (<https://www.networksofopportunity.org/Webinar>)
- Submit questions on dashboard
- Use the chat box for comments

Q&A

- Submit your questions by clicking on the Q&A icon at the bottom of your screen





Session Outline

- Welcome & Overview
- About Vital Village
- *Building Relationships and Partnerships towards an Equitable Food System*
- Panel Discussion and Audience Q&A
- Closing

About Vital Village Networks

Vital Village Networks is a national collective of diverse change-makers and organizations committed to pioneering sustainable approaches to transforming child, family, and community wellbeing

Networks of Opportunity for Child Wellbeing (NOW) is a national initiative powered by Vital Village Networks

NOW exists to achieve social transformation and racial justice by partnering with individuals, organizations, institutions, and coalitions across the country to build their capacity to equitably share power with communities that have faced ongoing racial oppression and marginalization.



Guiding Principles

BELONG - Centered in dignity and equity



LEARN - Those closest to the challenge are closest to the solution



ENGAGE - Design with, not for, users



TRANSFORM - Identify and frame challenges to address collectively

NOW Innovation Forum – Sign up to engage with a network of community leaders



¡Ya está en marcha una versión en español de nuestro sitio web!
Estamos muy emocionados de practicar la justicia del idioma,
mientras tanto, le agradecemos su paciencia. ¡Gracias!

<https://www.networksofopportunity.org/>

Featured Speakers



Hallie Nelson
*Director, Jefferson County
Food Policy Council*



Kim Ross
Founder, Mount Terra LLC

Reflective Action Guide



NOW 2023 Webinar Series

INSTRUCTIONS: Please download this document and take a few minutes to write some initial responses to the following questions

What resonated with you most from today's webinar?	
Which lever of change are you feeling compelled to focus attention on in your work?	
How are you thinking about children, families, and communities in your work differently?	
What 2-3 action steps might you take over the next two months to better uplift and honor the dignity of children, families, and community?	



Hallie Nelson
*Director, Jefferson County
Food Policy Council*



JEFFERSON COUNTY
FOOD POLICY
COUNCIL

Building relationships and partnerships toward an equitable food system
Construir relaciones y asociaciones hacia un sistema alimentario equitativo

Outline | Esquema

01

Intro to JCFPC
Intro al JCFPC

02

Our Food System
Nuestro Sistema
Alimentario

03

Coalition Building
Construyendo la
Coalición

04

Collaborative Action
Acción Colaborativa

05

Future Goals
Metas Futuras

06

Closing
Cierre



Intro to JCFPC | Intro al JCFPC

Community-led change for a thriving food future

Cambio liderado por la comunidad para un mejor futuro alimentario

280+ members from across the food system

Más que 280 miembros del sistema alimentario

Focused on school food, community leadership, food chain coordination, racial equity, and youth engagement

Enfocado en comida escolar, liderazgo comunitario, coordinación de la cadena alimentaria, equidad racial, y involucración de jóvenes



Intro to JCFPC | Intro al JCFPC

Mission: Influence policy to increase equitable access to healthy, local and affordable food and support a sustainable community food system.

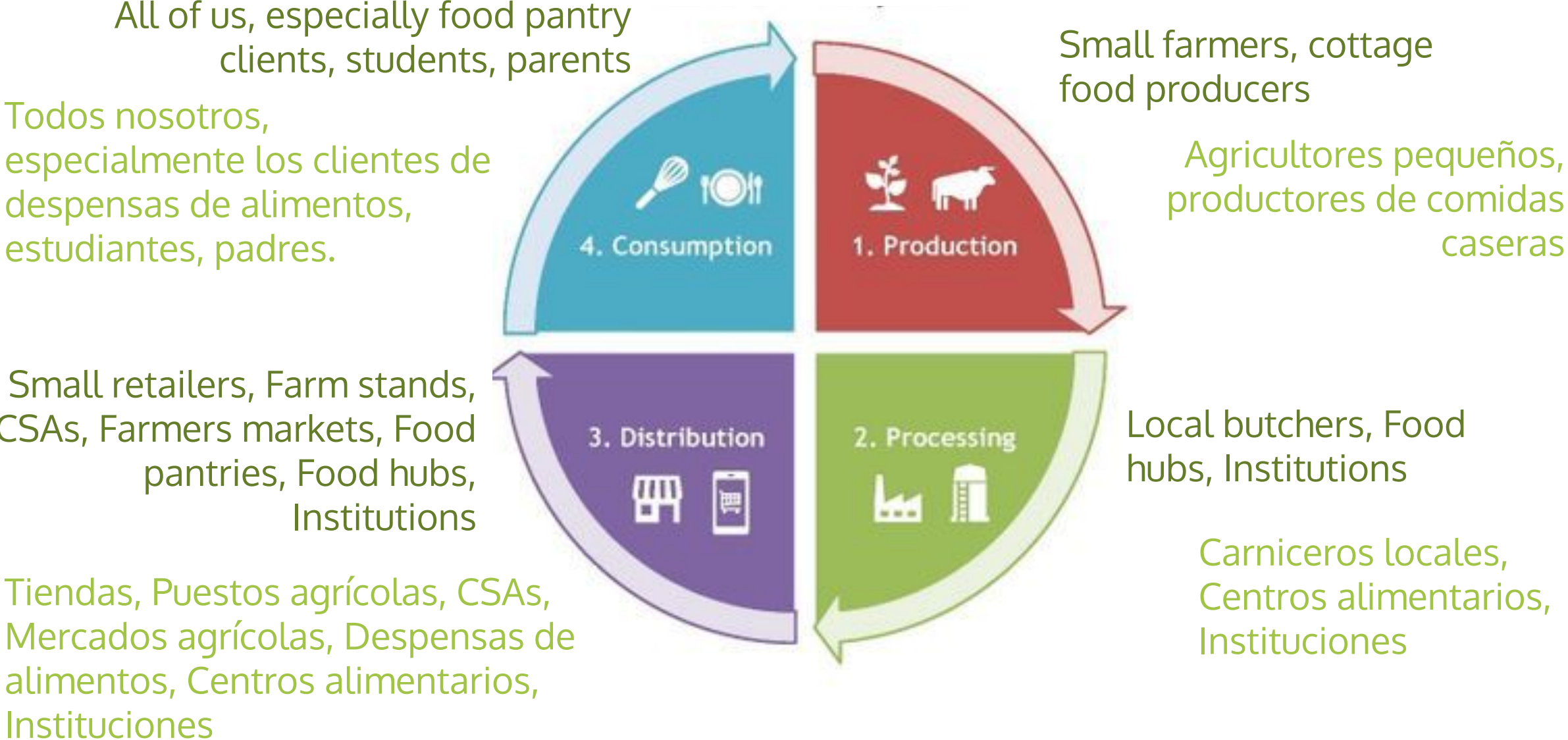
Misión: Influir en la política para aumentar el acceso equitativo a alimentos saludables, locales y asequibles y apoyar un sistema alimentario comunitario sostenible.

Vision: Jefferson County is a food secure community with health food access for all residents, a vibrant and equitable farming infrastructure, a healthy ecosystem and a thriving local food economy.

Visión: El condado de Jefferson es una comunidad con seguridad alimentaria con acceso a alimentos saludables para todos los residentes, una infraestructura agrícola dinámica y equitativa, un ecosistema saludable y una economía alimentaria local próspera.



Our Local Food System | Nuestro Sistema Alimentario Local



Coalition Building | Construyendo la Coalición



2015

Creating the FPC Creyendo el FPC

Founded by Jefferson County Public Health in partnership with other government agencies concerned about child nutrition

Fundado por Salud Pública del Condado de Jefferson en asociación con otras agencias gubernamentales preocupadas por la nutrición infantil.

2016-2020

Building a Coalition of Orgs Construyendo una Coalición de Organizaciones

JCFPC conducted outreach to government agencies, nonprofit organizations, and local institutions, Broadened the focus to food system-wide issues.

JCFPC llevó a cabo actividades de divulgación entre agencias gubernamentales, organizaciones sin fines de lucro e instituciones locales y amplió el enfoque a cuestiones que abarcan todo el sistema alimentario.

2022

Transforming to community leadership Transformando a liderazgo comunitario

JCFPC became a nonprofit under Trailhead Institute and focused on outreach to community members. JCFPC restructured to focus on community leadership.

JCFPC se convirtió en una organización sin fines de lucro bajo el Trailhead Institute y se centró en llegar a los miembros de la comunidad. JCFPC se reestructuró para centrarse en el liderazgo comunitario.

Coalition Building | Construyendo la Coalición

- Creative outreach
 - Meeting people where they are
 - Clear roles
 - Connecting in different languages
 - Partnering with hyperlocal organizations
- Shared vision
 - Creating shared goals
 - Building group expectations
 - Empowering members to act
- Alcance creativo
 - Conocer gente dónde están
 - Roles claros
 - Conectarse en diferentes idiomas
 - Asociarse con organizaciones hiperlocales
- Una visión compartida
 - Crear metas compartidas.
 - Construir expectativas del grupo
 - Empoderar a los miembros para tomar acción



Collaborative Action | Acción Colaborativa



- Policy issue guide
- Policy priorities
- Action Teams

- Guía de cuestiones de políticas
- Prioridades políticas
- Equipos de Acción

What's Next | Metas Futuras

- Continue creative outreach
- Continue to build understanding of the role each person/organization can play
- Build the leadership of our members
- Connect with decision makers

- Continuar con la divulgación creativa
- Continuar desarrollando la comprensión del papel que cada persona/organización puede desempeñar.
- Desarrollar el liderazgo de nuestros miembros
- Conéctese con tomadores de decisiones



THANK YOU | GRACIAS



JEFFPC


Contacts / Contactos

Hallie Nelson
Director / Directora
hallie@jeffcofpc.org

Javier Alvarado Vega
Community Organizer / Organizador Comunitario
javier@jeffcofpc.org



Kim Ross
Founder, Mount Terra, LLC



**BUILDING EQUITABLE FOOD
SYSTEMS IN RURAL APPALACHIA**

Mount Terra LLC presents:

THE H.U. MARKET PROJECT

BY: KIM L ROSS

STATISTICS

NOT ALL APPALACHIA IS THE SAME, BUT WHERE I LIVE, THE STATISTICS SPEAK TO THE SEVERATY OF THE NEED.

10,000 RESIDENT



1-GROCERY STORE

ABOUT US

- H.U. Market is a rural grocery concept in central Appalachia, that connects local and regional producers to their respective communities through food retail.
- We intentionally look to partner with local and regional food suppliers to strengthen the food system and help make it a sustainable one for future generations.



BUILDING THE RIGHT CONNECTIONS

- Food systems have many moving parts, and can be quite complex as a retailer of the those goods. Not knowing where to begin can be very overwhelming & discouraging.
- When you are able to connect with others in that space, be it a supplier or a connective resource, it makes the journey so beautiful. Partnerships and relationships have been the lifeline of our movement.



RELATIONSHIPS



01

FARMERS

Connecting with local farmers has been a huge part of building an equitable food system. They often don't have the supply for large grocery chains, so patronizing them is key to sustainability.

02

PRODUCERS

There are many producers of all types locally. I've built a wonderful list of many local and regional value added brands, that when partnered together help keep the supply chain nurtured.

03

AGENCIES

Many non-profit organizations and government agencies often have a network to connect you. They also have other resources to assist you along the way, including technical assistance and capital.

04

COMMUNITY

Your community is everything! Not only are they the customers, they are also your biggest fan and loudest supporter. They are your neighbors, students, workers, church members, etc.

LOOKING TO CONNECT?

Thanks for tuning in! If you'd like to stay in touch...

I'm on Instagram @kimleighross

Or you can send me an email:

info@mounterra.com



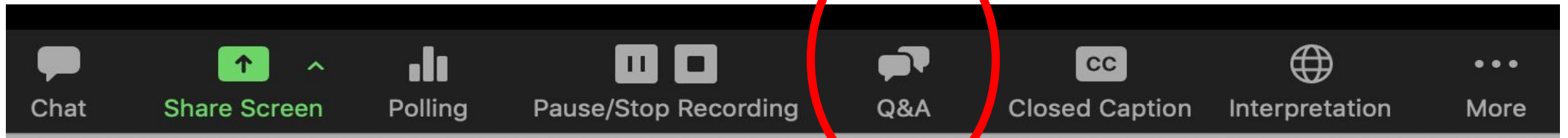
Kim L Ross

Q & A

Question and
Answer

Q&A

- Submit your questions by clicking on the Q&A icon at the bottom of your screen



Stay Connected



Community Food Systems Fellowship Roadmap

Centering Community Leadership and Power for an Equitable, Sustainable, & Just Food System

Download at: <https://www.vitalvillage.org/projects/community-food-systems-fellowship>



DECEMBER NETWORK CONNECTON MEETING

Celebrating the Unsung Heroes

Join us for an evening of celebration as we honor the Unsung Heroes in our community.

Monday, December 11, 2023

5:30–7:30p est

**In-Person: FGH Building 820 Harrison Ave,
Boston, MA 02118**

RSVP: <https://bit.ly/DecNCM2023>

Join Us in person
or virtually



Cultivating Community Connections: Peer Learning & Reflection Hour

*Tue. December 12, 2023
3:00 - 4:00 pm ET*

Cultivating Community Connections

PEER LEARNING & REFLECTION HOUR



Tuesday 12/12, 3:00 p.m. ET



Peer Learning Cluster (PLC)

Join us for an opportunity to connect with peers around the country and explore critical topics such as family engagement, ACES/trauma informed practice, ECE workforce development, and more.



Register: <https://bit.ly/3QR2LEv>

2023

NOW Network Survey

Your feedback allows for us to continue providing free opportunities for learning, connections, and leadership.



Biennial NOW Network Survey

We invite you to take our 2023 Biennial NOW Network Survey. Your input will help us to continue to provide free resources, tools, and learning opportunities that can better support your work on the ground.

Take the Survey: <https://questionpro.com/t/AL2RhZzCVI>

Season 2

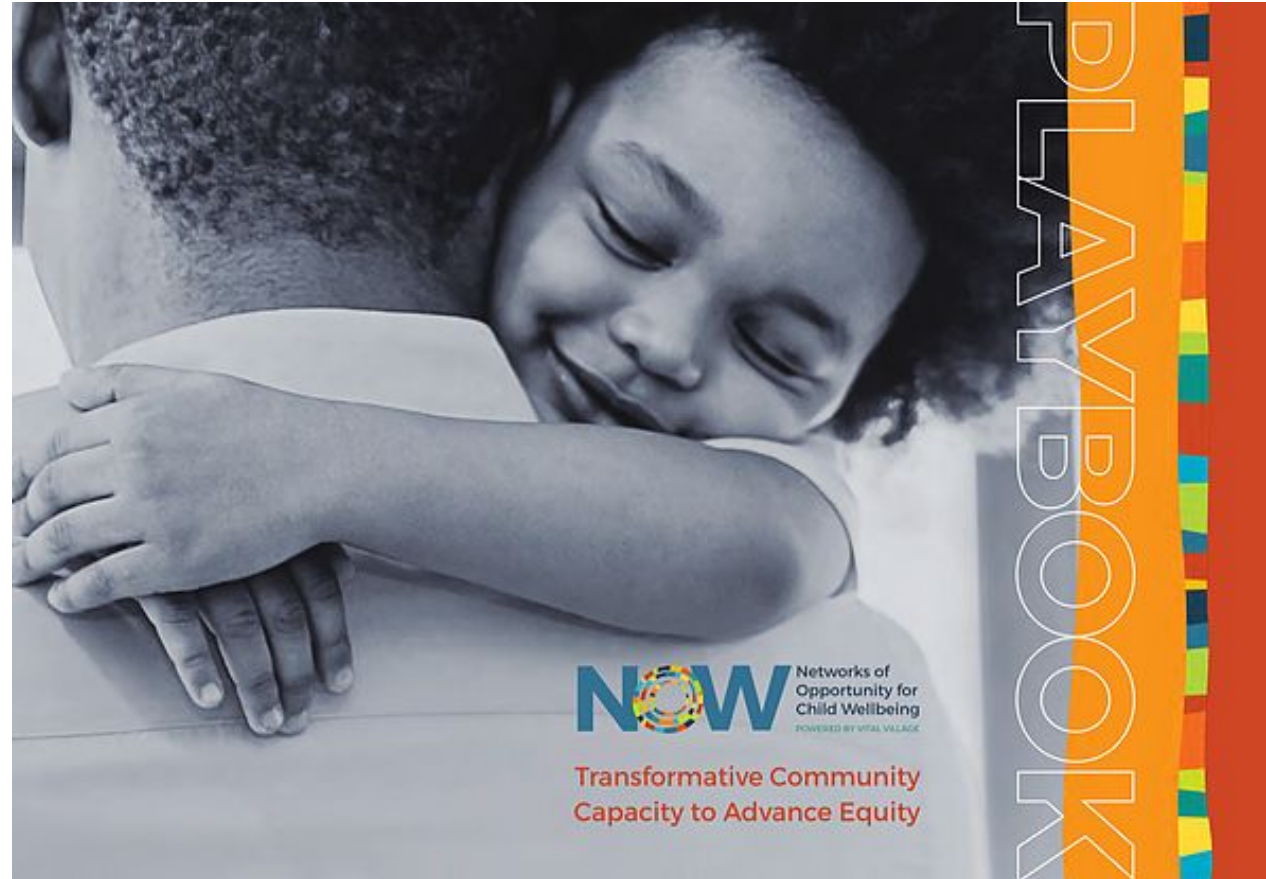
**NOW Podcast:
In the Arena with NOW**

**Listen to the latest
episode!**



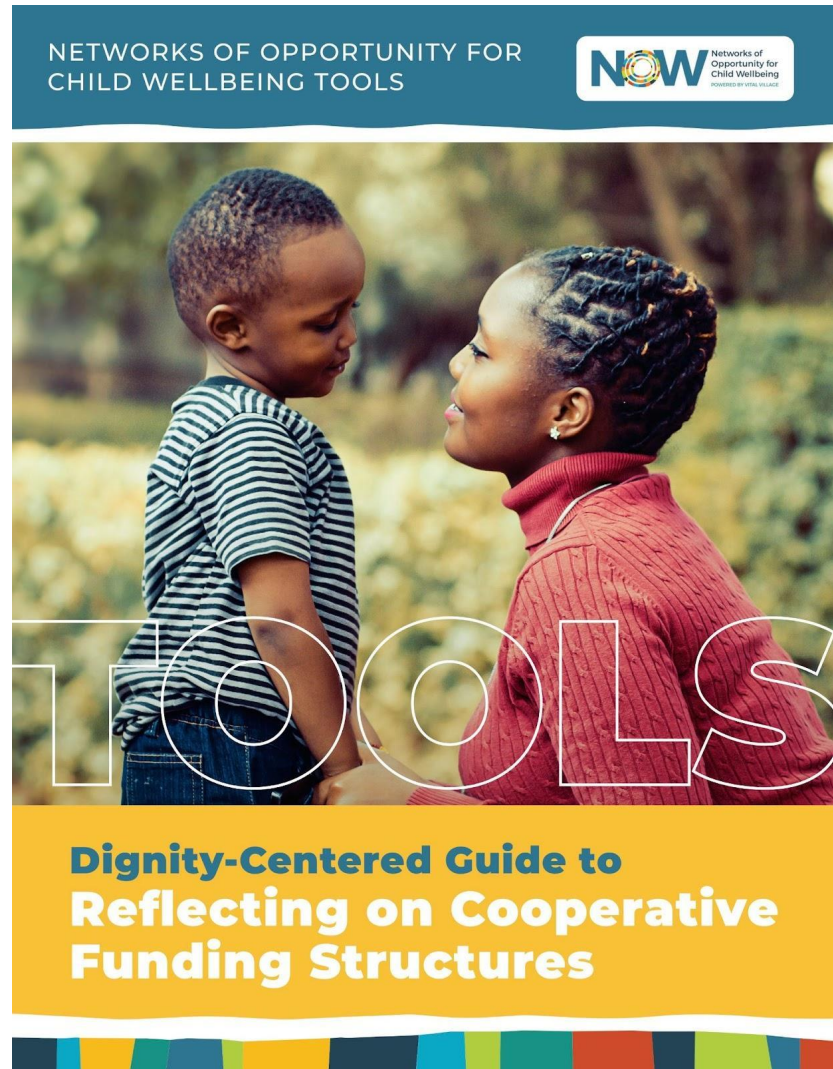
<https://www.networksofopportunity.org/podcast>

NOW Playbook: Transformative Community Capacity to Advance Equity



<https://www.networksofopportunity.org/now-playbook>

A Dignity-Centered Guide to Reflecting on Cooperative Funding Structures



<https://www.networksofopportunity.org/coop-reflection-guide>



Thank You!

<https://www.networksofopportunity.org/>

projecthope.csc@gmail.com

Follow us:

Twitter - @Vital_Village

Instagram - @vitalvillage

Facebook - @vitalvillagenetwork



NOW Networks of
Opportunity for
Child Wellbeing
POWERED BY VITAL VILLAGE

Vital Village Networks at Boston Medical Center
801 Albany Street, 2-N, Boston, MA 02119
617.414.3674
www.vitalvillage.org